

# THE ST. PETERSBURG INTERNATIONAL ECONOMIC FORUM 2019 FESTIVAL OF CULTURE

June 6–8, 2019, St. Petersburg

This document reflects the current programme as of May 30, 2019

June 5, 2019

**10:00–20:00**

Elena Tsvetkova  
Jewellery House (18,  
English Embankment)

Museums, exhibitions

## **'The Greatest Artists of Russia' Exhibition**

In the Elena Tsvetkova Jewellery House gallery, the project 'Contemporary Heritage of Russia', with the support of the movement 'We Love Russia', will present the works of the greatest contemporary artists, who have received the Gokhran of Russia award. Their works have been exhibited in the Gokhran of Russia, the Moscow Kremlin museums, the Diamond Fund of Russia, the State Historical Museum, the Hermitage, the Russian Museum and other museums across the country.

Participants need to show their badge to gain access to the exhibition.



**10:30–22:00**

2, Lermontovsky  
Prospekt

Museums, exhibitions

## **Excursion to the Grand Choral Synagogue of St. Petersburg**

The Grand Choral Synagogue, one of the largest and most beautiful in Europe, has been a quintessential symbol of multinational St. Petersburg for more than 120 years. It is the centre of gravity of the cultural, religious and business life of Russia's second largest city. The evening tour on 7 June is combined with a celebratory banquet to mark the Sabbath.

Excursion schedule:

5 June: 10:30–19:00, 20:30–22:00

6 June: 10:30–19:00, 20:30–22:00

7 June: 10:30–18:00, 18:00–22:00

Interested Forum participants must register in advance through the [personal web office](#).



**11:00–18:00**

Peter the Great  
Museum of  
Anthropology and  
Ethnography of the  
Russian Academy of  
Sciences (the  
Kunstkamera) (3,  
Universitetskaya  
Naberezhnaya)

Museums, exhibitions

**Exhibition: 'Arctic Nomads: The Art of Movement'**

A variety of multimedia materials collected during research expeditions to Yamal, Chukotka, and the Kola Peninsula accompany 95 rare items from the Museum of Anthropology and Ethnography's collection. The exhibition is a vivid depiction of the current nomadic traditions of the indigenous peoples of the Arctic.

Forum participants may present their badge to be granted entry.

Please be advised that participants are responsible for covering the price of any tour or other additional services.



**18:30–22:00**

Palma Society  
Mansion (18, Pereulok  
Pirogova)

Special events, receptions

**Evening event: 'A different setting for Nornickel'**

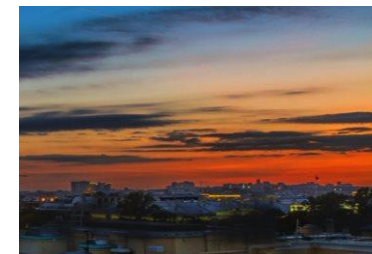
For the first time in the history of the St. Petersburg International Economic Forum, Nornickel is organizing its own party for its friends, colleagues and partners.

During the event, a historic mansion on the Moika river will become home to high-tech, music, ecology, and the creativity of the peoples of the North. Guests will be able to try out northern cuisine, take part in a charity auction, and listen to performances by musical groups.

The evening's format is eminently suitable for SPIEF guests to enjoy relaxed, calm communication with Nornickel partners and contractors.

Open to participants by invitation only.

More information about this event can be found in the [personal web office](#).



**19:00–21:30**

The Russian Museum,  
Mikhailovsky Castle  
(2, Sadovaya Ulitsa)

Theatrical performances, concerts

**Concert: A Stradivarius Violin in Mikhailovsky Castle**

The evening's guests will be treated to a performance by one of the world's most outstanding young musicians, the violin virtuoso Kevin Zhu (USA), who will perform a Paganini concerto on a rare Stradivarius violin.

The event will also feature the talents of the soprano Olga Pudova, Mariinsky Theatre soloist and Golden Sofit laureate.

The concert will take place in Georgievsky Hall, one of the largest and most luxurious state rooms in St. Michael's Castle. That evening, the Taurida State Symphony Orchestra will be conducted by Lorenzo Tazzieri.

A ticket is required to attend the event and can be ordered via the [personal web office](#).

Participants are responsible for covering the price of attendance.



**19:30–22:30**

Mikhailovsky Theatre  
(1, Ploschad Iskusstv)

Special events, receptions

**Gala Concert**

BIOCAD is starting off its global information campaign in the fight against rheumatic diseases with a gala concert featuring stars of Russian ballet. The event serves as an opportunity to spread the word about the importance of the fight against these diseases. This message is communicated using the universal international language of dance, which is accessible regardless of one's personal characteristics and potential limitations.

This event is open to Premium Package participants by invitation only.  
More information about this event can be found in the [personal web office](#).



June 6, 2019

**07:00–23:00**7, Sadovaya Ulitsa,  
Pushkin

Museums, exhibitions

**Catherine and Alexander Parks**

Parks are as important as the palace complex to the ambiance of the Tsarskoye Selo part of the city of Pushkin. The two most important of these are Catherine Park and Alexander Park, named after the palaces located within their territories.

Catherine Park is composed of two main sections: the Regular (Old Garden) Park and the Landscape (English) Park. The Regular Park is a formal garden symmetrically organizing the space around the palace, composed of a strict system of alleys, platforms, pavilions, and sculptures.

Alexander Park spans over approximately 200 ha and adjoins the parade ground (courtyard) of the Great Tsarskoye Selo (Catherine) Palace and can also be split into a regular (New Garden) park and a landscape park.

Premium Package participants may present their badge to be granted entry.

Please be advised that participants are responsible for covering the price of any tour or other additional services.

**10:00–20:15**Shuvalov Palace (21,  
Naberezhnaya Reki  
Fontanki)

Museums, exhibitions

**Fabergé Museum**

The museum's permanent exhibition boasts the world's largest collection of works by the famous Russian jeweller Carl Fabergé. The most treasured items in the collection are nine Easter eggs created by House of Fabergé masters for the last two Russian emperors Alexander III and Nicholas II. In addition to these internationally known masterpieces, guests will discover the surprising breadth of the jewellery work done by Fabergé and other famous Russian jewellers from the 19th to early 20th centuries: from tsars' snuff boxes and cigarette cases to carved stone miniatures, jewellery, Russian enamel art, decorative silverware, and precious icons.

Premium Package participants may present their badge to be granted entry.

Please be advised that participants are responsible for covering the price of any tour or other additional services.

**10:00–18:00**Arsenal Pavilion,  
Aleksander Park,  
Pushkin

Museums, exhibitions

**Exhibition: 'The Arsenal of Tsarskoye Selo: The Imperial Arms Collection'**

The exhibition, curated in collaboration with the State Hermitage Museum, was first opened in 2016. Items on display include the imperial collection of oriental cold steel and firearms from the 18th and 19th centuries and European arms and munitions from the 16th to 17th centuries, including armour, helmets, halberds, swords, and equestrian equipment. The State Hermitage Museum has contributed some of its own rare items for temporary display, including 16th century armour from the collection of Nicholas I.

Premium Package participants may present their badge to be granted entry.

Please be advised that participants are responsible for covering the price of any tour or other additional services.



**10:00–18:00**5A, Fermская  
Doroga, Pushkin

Museums, exhibitions

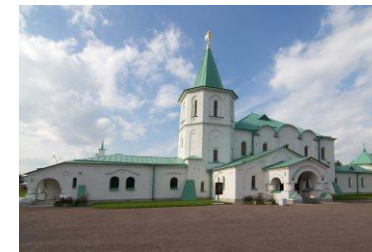
**Russia in the Great War Museum**

This is the first museum in Russia dedicated to the country's experiences during the tragic period of World War I (1914–1917). It is located in the Martial Chamber, a building conceived by Emperor Nicholas II as a pantheon of military glory.

The exhibition showcases real munitions and day-to-day objects used by those involved in World War I, as well as print and photographic materials from the Tsarskoye Selo Museum and Heritage Site collection.

Premium Package participants may present their badge to be granted entry.

Please be advised that participants are responsible for covering the price of any tour or other additional services.

**10:00–17:00**151, Prospekt  
Obukhovskoy  
Oborony

Museums, exhibitions

**Excursion to the Imperial Porcelain Factory and its Exhibits in the Halls of the Hermitage**

The Imperial Porcelain Factory invites you to uncover the mystery of its 'white gold'. Take a tour of the factory with its 275-year history and get acquainted with its collection of unique porcelain items in the halls of the Hermitage.

Learn about modern porcelain production technologies, the secrets and legends of its unique wares created in a factory with no less than three centuries of history.

Participation in the porcelain painting master class is a unique opportunity to unleash your creative potential and feel like a real artist.

Interested Forum participants must register in advance through the [personal web office](#).

**10:00–17:00**122, Prospekt  
Obukhovskoy  
Oborony

Museums, exhibitions

**Obukhov Factory Museum**

The Obukhov Steel Foundry Museum was founded at the end of the 19th century. It was located in the factory laboratory building and existed until the end of the 1920s. Nearly 50 years later, on 20 May 1976, the factory reopened the Museum of Labour, Revolutionary, and Military Glory, which was created on the initiative of the factory's veterans and union organizations. In May 2014, as part of a large-scale project to create the North-West Regional Centre of Almaz – Antey Corp., a separate two-story building was allocated as the plant's museum. The museum has eight rooms of permanent exhibition. The building, which now houses the museum, is a cultural heritage site. Designed by civil engineer Fedor Lumberg, it was built in 1896–1897 as the 'House of the hospital administration with the Obukhov Steel Plant clinic' with the funds provided by Pavel Obukhov, one of the factory's founders.

In the building of the new museum and exhibition complex there is an interactive layout of the Obukhov plant of the late 19th and early 20th centuries, created by the joint efforts of the Museum of History of the Obukhov Plant and the founders of the legendary Grand Maket Rossiya project. The model layout represents the operation of the factory's production facilities, the passers-by on the Shlisselburg road (now Obukhovskoy Oborony Avenue) going about their business, and the life of workers.

Forum participants may present their badge to be granted entry.

Please be advised that participants are responsible for covering the price of any tour or other additional services.





**10:00–18:00**

Elena Tsvetkova  
Jewellery House (18,  
English Embankment)

Museums, exhibitions

**'The Greatest Artists of Russia' Exhibition**

In the Elena Tsvetkova Jewellery House gallery, the project 'Contemporary Heritage of Russia', with the support of the movement 'We Love Russia', will present the works of the greatest contemporary artists, who have received the Gokhran of Russia award. Their works have been exhibited in the Gokhran of Russia, the Moscow Kremlin museums, the Diamond Fund of Russia, the State Historical Museum, the Hermitage, the Russian Museum and other museums across the country.

Participants need to show their badge to gain access to the exhibition.



**10:30–22:00**

2, Lermontovsky  
Prospekt

Museums, exhibitions

**Excursion to the Grand Choral Synagogue of St. Petersburg**

The Grand Choral Synagogue, one of the largest and most beautiful in Europe, has been a quintessential symbol of multinational St. Petersburg for more than 120 years. It is the centre of gravity of the cultural, religious and business life of Russia's second largest city. The evening tour on 7 June is combined with a celebratory banquet to mark the Sabbath.

Excursion schedule:

5 June: 10:30–19:00, 20:30–22:00

6 June: 10:30–19:00, 20:30–22:00

7 June: 10:30–18:00, 18:00–22:00

Interested Forum participants must register in advance through the [personal web office](#).



**10:30–17:00**

2/19, Pushkinskaya  
Ulitsa, Pushkin

Museums, exhibitions

**Pushkin Memorial Dacha Museum**

The Pushkin Memorial Dacha Museum is located in a single-story wooden building, the original architectural façade of which has been mostly preserved. The poet Alexander Pushkin and his young wife lived in this building from May to October 1831. This dacha (summer home) was the place where he penned 'The Tale of Tsar Saltan', 'Onegin's Letter to Tatyana,' and other works.

Forum participants may present their badge to be granted entry.

Please be advised that participants are responsible for covering the price of any tour or other additional services.



**10:30–17:00**

2, Sadovaya Ulitsa,  
Pushkin

Museums, exhibitions

**Memorial Lyceum Museum**

Alexander Pushkin studied at the Imperial Lyceum of Tsarskoye Selo from 1811 to 1817. The school's grand hall, library (featuring original books from the Lyceum's collection, some of which were a gift to the school from Alexander I), classrooms, and dormitories all help re-create the atmosphere in which the students of this privileged educational establishment lived and studied.

Forum participants may present their badge to be granted entry.

Please be advised that participants are responsible for covering the price of any tour or other additional services.



### 10:30–17:00

The General Staff  
Building of the State  
Hermitage Museum  
(2, Palace Square)

Museums, exhibitions

#### **Exhibition: Artificial Intelligence and Intercultural Dialogue**

The Russian Direct Investment Fund (RDIF), the Russian Federation's sovereign wealth fund, and the State Hermitage Museum present an exhibition of works by modern artists from around the world, dedicated to the creative capabilities of artificial intelligence (AI).

AI-based contemporary art has received global recognition following the sale of a painting created by the French art group Obvious, at Christie's Auction House on 25 October 2018. Obvious' artists used a generative adversarial network (GAN) to mimic the creative process of human intelligence.

The exhibition also features the work of Saudi Arabian artist Lulwa Al-Homoud, who has used AI to develop a new abstract graphical language based on the Arabic alphabet; Italian artist Davide Quayola, who presents an AI 'perception' of classic impressionist paintings; and Turkish artist Refik Anadol, whose work Machine hallucinations was created by analysing 100,000 photographs of architecture.

The exhibition will feature the work of 14 artists and art collectives from ten countries.

A ticket is required to attend the exhibition and can be purchased at one of the museum's ticket offices.



### 11:00–18:00

Peter the Great  
Museum of  
Anthropology and  
Ethnography of the  
Russian Academy of  
Sciences (the  
Kunstkamera) (3,  
Universitetskaya  
Naberezhnaya)

Museums, exhibitions

#### **Exhibition: 'Arctic Nomads: The Art of Movement'**

A variety of multimedia materials collected during research expeditions to Yamal, Chukotka, and the Kola Peninsula accompany 95 rare items from the Museum of Anthropology and Ethnography's collection. The exhibition is a vivid depiction of the current nomadic traditions of the indigenous peoples of the Arctic.

Forum participants may present their badge to be granted entry.

Please be advised that participants are responsible for covering the price of any tour or other additional services.



### 11:00–19:00

Peter and Paul  
Fortress, Nevsky  
Curtain Wall

Museums, exhibitions

#### **Exhibition: 'A story that will continue'**

This exhibition is about the artistic journey of the Imperial Porcelain Factory, the renowned St. Petersburg porcelain producer, from its foundation in 1744 to the present day: about the origin of porcelain in Russia, the invention and development of new production technologies and decorative techniques, the factory's craftsmen, and the works they create today, which bring prestige to Russian art. In the exhibition, more than 1,300 porcelain items of the 18th–21st centuries, all stamped with the seal of the Imperial Porcelain Factory, will enable visitors to trace the main trends in the art of Russian porcelain over almost three centuries.

Forum participants may present their badge to be granted entry.

Please note that participants are responsible for covering the price of excursions or other additional services.



**13:00–20:30**

The Russian Museum,  
Mikhailovsky Palace,  
Garden Vestibule (4,  
Inzhenernaya Ulitsa)

Museums, exhibitions

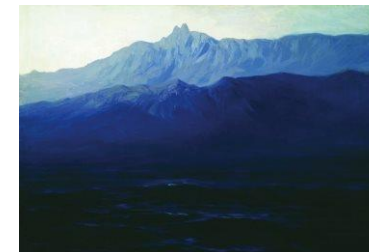
**‘Crimea Through the Paintings of Arkhip Kuindzhi’ Exhibition**

The Russian Museum contains numerous works of art created in Crimea and received as a gift from the Arkhip Kuindzhi Society. They follow the soul searching and artistic quest of the painter through his study of colour relationships and contrasts and the generalisation of form. He contemplated the movement of clouds over the sea and steppe, atmospheric fluctuations during the day, fog and sunsets.

The exhibition in the Garden Vestibule of the Mikhailovsky Palace presents selected paintings by Arkhip Kuindzhi devoted to the natural landscapes of Crimea. In his paintings, as in all creative heritage, he conveyed the diversity of the beautiful and eternal in nature, as seen by his admiring eyes.

Premium package participants need to show their badge to gain access to the exhibition.

Please note that the museum tour and other additional services are paid by the participant separately.



**13:00–20:30**

The Russian Museum,  
Mikhailovsky Castle  
(2, Sadovaya Ulitsa)

Museums, exhibitions

**‘Nicholas I’ Exhibition**

The exhibition from the The Saga of the Romanovs cycle explores the personality of Nicholas I alongside his foreign policy, ideology, influence over national culture and society as a whole, and life in the imperial court and the royal family, as reflected in paintings, drawings, coins and decorative and applied arts. The exposition includes numerous ceremonial portraits of Emperor Nicholas I, his associates and members of the royal family, created by artists and sculptors of the calibre of George Dow, Franz Krüger, Orest Kiprensky, Fyodor Tolstoy, and others. The paintings and drawings, ceremonial monumental vases and dinnerware, furniture, bronzeware, rare coins, and the many other furnishings that make up the exhibition give a sense of the artistic life of a prosperous country, and of the sophisticated interiors of the royal residences and the life of the highest court.

Premium package participants need to show their badge to gain access to the exhibition.

Please note that the museum tour and other additional services are paid by the participant separately.



**13:00–20:30**

The Russian Museum,  
Benois Wing (2,  
Naberezhnaya Kanala  
Griboyedova)

Museums, exhibitions

**‘Three St. Petersburg Collections’ Exhibition**

The exhibition displays paintings, drawings, sculptures, theatrical decorative and ornamental art and the coins of three private collections in St. Petersburg: the Paleev family, Vladimir Berezovsky and Kirill and Julia Naumov. The exposition introduces practically unknown works of the greatest Russian artists of the 19th–20th centuries: Ivan Aivazovsky, Nathan Altman, Léon Bakst, Alexandre Benois, Mikhail Vrubel, Natalia Goncharova, Boris Kustodiev, Konstantin Korovin, Kuzma Petrov-Vodkin, Ilya Repin, Zinaida Serebriakova, Konstantin Somov, and others.

Premium package participants need to show their badge to gain access to the exhibition.

Please note that the museum tour and other additional services are paid by the participant separately.





**15:00–17:00**

St. Petersburg  
Stieglitz State  
Academy of Art and  
Design (15, Solyanoy  
Pereulok)

Museums, exhibitions

**Tour of the Exhibition 'Golden Thread – Road of Creativity'**

The 4th International Biennale of Hot Enamel Art 'Golden Thread – Road of Creativity' will be held in the halls of the Stieglitz Academy educational Museum of Applied Art. The exhibition will include works by contemporary enamel artists, professionals from various countries, and teachers and students from Russian and international universities.

The exhibition will present artistic traditions and experimental techniques used to create original works of art using hot enamel techniques, showcasing the diverse approaches of a number of artists and schools.

In addition to this exhibition, guests will also be able to peruse the works of the Museum of Applied Art's permanent collection.

Tours are held twice a day, starting at 15:00 and 16:00.

Interested Forum participants must register in advance through the [personal web office](#).



**15:00–16:30**

18, Sadovaya Ulitsa

Museums, exhibitions

**Tour of the Main Building of the National Library of Russia**

The National Library of Russia is the oldest public library in Russia. It was founded at the behest of Catherine II in 1795.

The library's main building occupies an entire city block located in between Sadovaya Ulitsa, Nevsky Prospekt, and Ostrovsky Square.

During the tour guests will learn about the library's history, famous staff members, and some of its unique collections. The tour programme will include visits to historical rooms that are usually not accessible to library visitors, including the Russian Books Collection, the Rare Books collection, Voltaire's Library, and the Manuscripts collection.

Interested Forum participants must register in advance through the [personal web office](#).



**15:00–16:00**

165/2, Moskovsky  
Prospekt

Museums, exhibitions

**Tour of the New Building of the National Library of Russia**

During this tour, knowledgeable guides will describe the contents of the library's collections, catalogues, reading room locations, and services offered to library visitors.

Particular attention will be paid to new storage and preservation technologies.

The tour will be given in Russian.

Interested Forum participants must register in advance through the [personal web office](#).



**15:00–16:00**

1/33, 4-ya  
Krasnoarmeyskaya  
Ulitsa

Museums, exhibitions

**Tour of the Plekhanov House of the National Library of Russia**

This tour is intended to show guests items from the rooms of the Free Economic Society and the Geneva apartment of the Plekhanovs.

Guests will be able to see particularly interesting documents from the library's collection: books featuring handwritten notes by Georgi Plekhanov, publications featuring the autographs of famous people from that era, and the stamps of political and social organization libraries, which all come together to tell the story of how Georgi Plekhanov's personal library was formed.

The tour will be given in Russian.

Interested Forum participants must register in advance through the [personal web office](#).



**16:00–17:00**

Peter the Great  
Museum of  
Anthropology and  
Ethnography of the  
Russian Academy of  
Sciences (the  
Kunstkamera) (3,  
Universitetskaya  
Naberezhnaya)

Museums, exhibitions

**Gottorp (Greater Academic) Globe Tour Led by Chief Collection Manager Natalia Kopaneva**

The Gottorp Globe is a unique example of late 17th century engineering ingenuity. The rotating mechanism remains functional to this day. The outside of the globe features a map of the world, while the inside houses a map of the night sky. The tour will be given in Russian.

Interested Forum participants must register in advance through the [personal web office](#).



**16:00–18:00**

Boris Yeltsin  
Presidential Library (3,  
Senate Square)

Museums, exhibitions

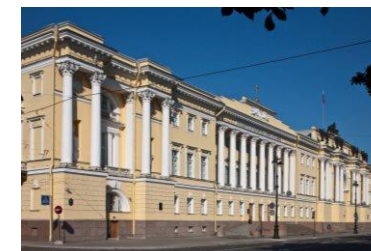
**Tour: A 21st Century Library in the Historical Synod Building**

The Boris Yeltsin Presidential Library is the largest information, cultural, and educational centre in Russia. The tour will guide guests through the historical interiors of the Synod building and the contemporary halls of the Presidential Library, which were created for holding social and state events. The latter include a conference hall and a transforming multimedia hall, which features the latest 3D-enabled technologies. Part of the excursion is a presentation of the library's electronic collection, which is stored in the Electronic Reading Room and on the Library's Internet portal. The collection includes materials on Russian history, the theory and practice of Russian statehood, the Russian language, literature, geography, and law. Guests will learn about the temporary and permanent exhibitions located within Constitution Hall, which is also home to the singular inaugural copy of the Constitution of the Russian Federation.

Tours are held twice a day, starting at 16:00 and 17:00.

Tour groups gather in the main foyer of the Presidential Library before meeting their guides.

Forum participants may present their badge to be granted entry.



**16:00–20:00**

Institute of Oriental  
Manuscripts of the  
Russian Academy of  
Sciences (18,  
Dvortsovaya  
Embankment)

Museums, exhibitions

**Exhibition: 'The Manuscript Treasures of the East on the Banks of the Neva River'**

Institute of Oriental Manuscript's presents a selection of manuscript masterpieces from the East. The Institute houses one of the largest collections of manuscripts in the world – the largest in Russia – with over 115,000 items in 65 modern and dead languages. This unique collection is located in the luxurious interior of the Novo-Mikhailovsky (New Michael) Palace, a vivid example of 19th century palace architecture.

Forum participants may present their badge to be granted entry.



**17:00–18:00**

Peter the Great  
Museum of  
Anthropology and  
Ethnography of the  
Russian Academy of  
Sciences (the  
Kunstkamera) (3,  
Universitetskaya  
Naberezhnaya)

Museums, exhibitions

**'Arctic Nomads: The Art of Movement' Tour Led by Kunstkamera Director Andrei Golovnev**

This tour will consider the expeditions during which the exhibition's multimedia materials were collected and why multimedia exhibits complement the historical items from the museum's collection so well. It will also touch on the idea of how nomadic traditions may be useful for urban people and modern businesses.

Interested Forum participants must register in advance through the [personal web office](#).



**18:30–21:45**

2, Moshkov Pereulok

Theatrical performances, concerts

**The 'Faceless' Immersive Show**

'Faceless' is an alternate reality theatrical performance. There are no stages or curtains, and the main character is played by the viewer themselves.

In this immersive performance, theatregoers become a part of the action, space, and atmosphere and interact with characters that will help them seek answers to their innermost questions.

'Faceless' takes place over four floors of an over 300-year-old mansion in the heart of St. Petersburg.

Viewers will have the chance to meet 16 characters, traverse over 50 rooms, and, most importantly, see one of three simultaneous endings.

The script of 'Faceless' was inspired by the play 'Ghosts' by the playwright Henrik Ibsen. The performance is a prequel, describing the strange happenings that occurred five hours before the events of the play.

Directors: Migel, Mia Zanette.

A ticket is required to attend the performance and can be ordered via the [personal web office](#).

Participants are responsible for covering the price of attendance.



**19:00–21:30**

Jazz Philharmonic Hall  
(27, Zagorodny  
Prospekt)

Theatrical performances, concerts

**Melodies of Hollywood and Broadway. Concert**

The programme will include famous pieces from Hollywood films and Broadway musicals that the great jazz musicians of the past turned into the pillars of the genre. Performers will present their original interpretations of George Gershwin, Jerome Kern, Irving Berlin, and many other renowned American composers.

The jazz parade brings together Elvira Trafova, Yulia Kasian, Tatiana Bubelnikova, Fyodor Durandin, and David Goloshchekin Jazz Ensemble.

A ticket is required to attend the event and can be ordered via the [personal web office](#).

Participants are responsible for covering the price of attendance.



**19:00–21:00**

St. Petersburg State Academic Capella (20, Naberezhnaya Reki Moiki)

Theatrical performances, concerts

### **Concert of St. Petersburg State Academic Capella Symphony Orchestra**

The concert will include musical pieces of different epochs and styles: from recognized classics such as Rimsky-Korsakov and Tchaikovsky to outstanding contemporary composers like Gilliland and Shor. Solo: Julian Milkis, clarinet. Conductor: Alexander Chernushenko, People's Artist of Russia.

A ticket is required to attend the event and can be ordered via the [personal web office](#).

Participants are responsible for covering the price of attendance.



**19:00–22:00**

Ambar Bourgeois Gallery (2, Bolshaya Konyushennaya Ulitsa)

Special events, receptions

### **Grand Opening of the 'St. Petersburg Characters' Exhibition**

The grand opening of the Anatoly Belkin exhibition 'St. Petersburg Characters'. Participants and guests of the Forum can enjoy an unforgettable evening in good company in the heart of St. Petersburg and try themselves as a porcelain artist.

For Premium package participants attendance to the event is by invitation.



**19:00–21:00**

Alexandrinsky Theatre (6, Ploshchad Ostrovskogo)

Theatrical performances, concerts

### **'The Birth of Stalin' Theatre Performance**

The Birth of Stalin is a play by Valery Fokin about spiritual and moral revival, about the transformation of the young revolutionary Joseph Dzhugashvili into a leader, about the disappearance of a man and the birth of a tyrant.

The performance is in Russian with simultaneous translation into English.

The legendary Alexandrinsky Theatre is the oldest national imperial theatre in Russia. It was established by Order of Empress Elizabeth, daughter of Peter the Great, on 30 August 1756. Alexandrinsky Theatre spawned Russian theatre as a whole, and the date of its foundation is considered the anniversary of Russian professional theatre.

This event is by ticket only, which can be ordered through the personal web office.

The ticket is paid by the participant separately.





**19:30–22:00**

Gorky House of  
Scientists of Russian  
Academy of Sciences  
(26, Dvortsovaya  
Naberezhnaya)

Special events, receptions

### **Evening Reception of the International Cultural Project 'Russian Seasons'**

The 'Russian Seasons' ambassadors, some of Russia's leading creative figures, will be announced at the reception.

The evening will include a concert with performances by People's Artist of the Republic of Bashkortostan and Mariinsky Theatre soloist Askar Abdrazakov and artists from the Russian-German Music Academy, a joint project by the Mariinsky Theatre and RCCR Projects GmbH Berlin.

The Academy's soloists will be the famous German violinist Tobias Feldmann and Russian soprano Yulia Matochkina, first prize winner of the 2015 International Tchaikovsky Competition.

The musicians will perform masterpieces of Russian and German chamber music: Robert Schumann's romances and Pyotr Ilyich Tchaikovsky's virtuoso composition 'Souvenir de Florence.'

The programme pays particular attention to the close musical ties between the two countries and the levels of mastery of the performers participating in the 2019 International Cultural Project 'Russian Seasons' in Germany.

This event is open to Premium Package participants by invitation only.

More information about this event can be found in the [personal web office](#).



**19:30–22:30**

Mikhailovsky Theatre  
(1, Ploschad Iskusstv)

Theatrical performances, concerts

### **Ballet: Don Quixote**

Colourful, vibrant, direct, spontaneous: all these epithets can be applied to Don Quixote, but none of them can fully convey the sense of joy that the ballet invariably arouses in the audience. The red capes of the toreadors, the strumming of guitars, the clicking of castanets, coquettish glances from behind open fans... The enchanting levity of the 'ballet of Spain' surges onto the Mikhailovsky Theatre stage. Each performer interprets this ballet in their own way. While it demands virtuosity and stamina, the dancers are given complete freedom of choice in the way they act the parts. It is possible to depict the sincerity and straightforwardness of the characters or present them as cunning deceivers; place an emphasis on simple domestic details, or portray fiery passions. The permutations are endless, and therein lies one of the secrets of the ballet's phenomenal popularity.

A ticket is required to attend the event and can be ordered via the [personal web office](#).

Participants are responsible for covering the price of attendance.



**19:30–22:30**

Russian Railway  
Museum (4,  
Bibliotchny Pereulok,  
building 2)

Special events, receptions

### **'Night at the Museum'**

This event will celebrate the 45th anniversary of the start of construction of the Baikal–Amur Mainline. The event will include a musical tour by Garik Sukachov and the Campanella Stone Star orchestra.

This event is open to Premium Package participants by invitation only.

More information about this event can be found in the [personal web office](#).





**20:00–23:00**

Metropol Restaurant  
(22/2, Sadovaya  
Ulitsa)

Special events, receptions

**'Russia and the World' Non-Trivial Game**

Quiz Game.

Hosts: Mikhail Skipsky, player of the 'What? Where? When?' Club, and actor Andrey Maksimkov.

A simultaneous game for 15–20 teams (6 players per team).

The questions will address the past and the present of Russia's cooperation with the global community in the fields of culture, science and business: great scholars, famous authors, Nobel Prize winners, as well as contemporary events that rank Russia among the most influential powers of the world.

This event is open to Premium and Standard Package participants by invitation only. Prior registration is required.

More information about this event can be found in the [personal web office](#).



**20:00–22:30**

Mariinsky Theatre (1,  
Teatralnaya  
Ploshchad)

Theatrical performances, concerts

**Le Corsaire**

Ballet in three acts with a prologue and epilogue.

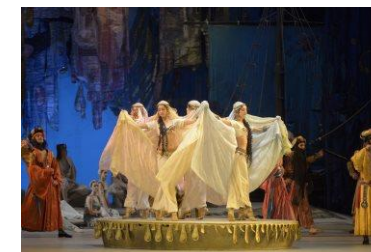
Music by Adolphe Adan, Cesare Pugni, Léo Delibes, Riccardo Drigo and Pyotr Oldenburgsky.

Libretto by Henri Vernoy de Saint-Georges and Joseph Mazilier, edited by Yuri Slonimsky and Pyotr Gusev.

Choreography by Pyotr Gusev (1987) based on the composition and choreography of Marius Petipa.

A ticket is required to attend the event and can be ordered via the [personal web office](#).

Participants are responsible for covering the price of attendance.



**22:00–00:00**

Mariinsky Theatre  
Concert Hall (20,  
Ulitsa Pisareva – entry  
from 37, Ulitsa  
Dekabristov)

Theatrical performances, concerts

**Late-night concert: Denis Matsuev and Valery Gergiev**

Soloist – Denis Matsuev (piano)

The Mariinsky Orchestra

Conductor – Valery Gergiev

Programme:

Claude Debussy – Prélude à l'après-midi d'un faune;

Sergei Rachmaninoff – Piano Concerto No. 4 in G minor, Op. 40;

Maurice Ravel – Boléro.

A ticket is required to attend the event and can be ordered via the [personal web office](#).

Participants are responsible for covering the price of attendance.



June 7, 2019

**07:00–23:00**7, Sadovaya Ulitsa,  
Pushkin

Museums, exhibitions

**Catherine and Alexander Parks**

Parks are as important as the palace complex to the ambiance of the Tsarskoye Selo part of the city of Pushkin. The two most important of these are Catherine Park and Alexander Park, named after the palaces located within their territories.

Catherine Park is composed of two main sections: the Regular (Old Garden) Park and the Landscape (English) Park. The Regular Park is a formal garden symmetrically organizing the space around the palace, composed of a strict system of alleys, platforms, pavilions, and sculptures.

Alexander Park spans over approximately 200 ha and adjoins the parade ground (courtyard) of the Great Tsarskoye Selo (Catherine) Palace and can also be split into a regular (New Garden) park and a landscape park.

Premium Package participants may present their badge to be granted entry.

Please be advised that participants are responsible for covering the price of any tour or other additional services.

**10:00–17:00**151, Prospekt  
Obukhovskoy  
Oborony

Museums, exhibitions

**Excursion to the Imperial Porcelain Factory and its Exhibits in the Halls of the Hermitage**

The Imperial Porcelain Factory invites you to uncover the mystery of its 'white gold'. Take a tour of the factory with its 275-year history and get acquainted with its collection of unique porcelain items in the halls of the Hermitage.

Learn about modern porcelain production technologies, the secrets and legends of its unique wares created in a factory with no less than three centuries of history.

Participation in the porcelain painting master class is a unique opportunity to unleash your creative potential and feel like a real artist.

Interested Forum participants must register in advance through the [personal web office](#).

**10:00–17:00**122, Prospekt  
Obukhovskoy  
Oborony

Museums, exhibitions

**Obukhov Factory Museum**

The Obukhov Steel Foundry Museum was founded at the end of the 19th century. It was located in the factory laboratory building and existed until the end of the 1920s. Nearly 50 years later, on 20 May 1976, the factory reopened the Museum of Labour, Revolutionary, and Military Glory, which was created on the initiative of the factory's veterans and union organizations. In May 2014, as part of a large-scale project to create the North-West Regional Centre of Almaz – Antey Corp., a separate two-story building was allocated as the plant's museum. The museum has eight rooms of permanent exhibition. The building, which now houses the museum, is a cultural heritage site. Designed by civil engineer Fedor Lumberg, it was built in 1896–1897 as the 'House of the hospital administration with the Obukhov Steel Plant clinic' with the funds provided by Pavel Obukhov, one of the factory's founders.

In the building of the new museum and exhibition complex there is an interactive layout of the Obukhov plant of the late 19th and early 20th centuries, created by the joint efforts of the Museum of History of the Obukhov Plant and the founders of the legendary Grand Maket Rossiya project. The model layout represents the operation of the factory's production facilities, the passers-by on the Shlisselburg road (now Obukhovskoy Oborony Avenue) going about their business, and the life of workers.

Forum participants may present their badge to be granted entry.



Please be advised that participants are responsible for covering the price of any tour or other additional services.

**10:00–17:30**

The Russian Museum,  
Benois Wing (2,  
Naberezhnaya Kanala  
Griboyedova)

Museums, exhibitions

### **‘Three St. Petersburg Collections’ Exhibition**

The exhibition displays paintings, drawings, sculptures, theatrical decorative and ornamental art and the coins of three private collections in St. Petersburg: the Paleev family, Vladimir Berezovsky and Kirill and Julia Naumov. The exposition introduces practically unknown works of the greatest Russian artists of the 19th–20th centuries: Ivan Aivazovsky, Nathan Altman, Léon Bakst, Alexandre Benois, Mikhail Vrubel, Natalia Goncharova, Boris Kustodiev, Konstantin Korovin, Kuzma Petrov-Vodkin, Ilya Repin, Zinaida Serebriakova, Konstantin Somov, and others.

Premium package participants need to show their badge to gain access to the exhibition.

Please note that the museum tour and other additional services are paid by the participant separately.



**10:00–17:30**

The Russian Museum,  
Mikhailovsky Castle  
(2, Sadovaya Ulitsa)

Museums, exhibitions

### **‘Nicholas I’ Exhibition**

The exhibition from the The Saga of the Romanovs cycle explores the personality of Nicholas I alongside his foreign policy, ideology, influence over national culture and society as a whole, and life in the imperial court and the royal family, as reflected in paintings, drawings, coins and decorative and applied arts. The exposition includes numerous ceremonial portraits of Emperor Nicholas I, his associates and members of the royal family, created by artists and sculptors of the calibre of George Dow, Franz Krüger, Orest Kiprensky, Fyodor Tolstoy, and others. The paintings and drawings, ceremonial monumental vases and dinnerware, furniture, bronzeware, rare coins, and the many other furnishings that make up the exhibition give a sense of the artistic life of a prosperous country, and of the sophisticated interiors of the royal residences and the life of the highest court.

Premium package participants need to show their badge to gain access to the exhibition.

Please note that the museum tour and other additional services are paid by the participant separately.



**10:00–17:30**

The Russian Museum,  
Mikhailovsky Palace,  
Garden Vestibule (4,  
Inzhenernaya Ulitsa)

Museums, exhibitions

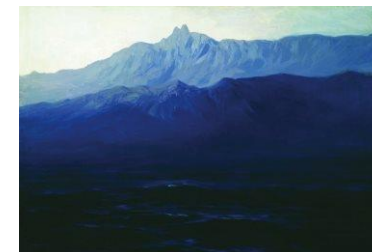
### **‘Crimea Through the Paintings of Arkhip Kuindzhi’ Exhibition**

The Russian Museum contains numerous works of art created in Crimea and received as a gift from the Arkhip Kuindzhi Society. They follow the soul searching and artistic quest of the painter through his study of colour relationships and contrasts and the generalisation of form. He contemplated the movement of clouds over the sea and steppe, atmospheric fluctuations during the day, fog and sunsets.

The exhibition in the Garden Vestibule of the Mikhailovsky Palace presents selected paintings by Arkhip Kuindzhi devoted to the natural landscapes of Crimea. In his paintings, as in all creative heritage, he conveyed the diversity of the beautiful and eternal in nature, as seen by his admiring eyes.

Premium package participants need to show their badge to gain access to the exhibition.

Please note that the museum tour and other additional services are paid by the participant separately.



**10:00–20:15**

Shuvalov Palace (21,  
Naberezhnaya Reki  
Fontanki)

Museums, exhibitions

**Fabergé Museum**

The museum's permanent exhibition boasts the world's largest collection of works by the famous Russian jeweller Carl Fabergé. The most treasured items in the collection are nine Easter eggs created by House of Fabergé masters for the last two Russian emperors Alexander III and Nicholas II. In addition to these internationally known masterpieces, guests will discover the surprising breadth of the jewellery work done by Fabergé and other famous Russian jewellers from the 19th to early 20th centuries: from tsars' snuff boxes and cigarette cases to carved stone miniatures, jewellery, Russian enamel art, decorative silverware, and precious icons.

Premium Package participants may present their badge to be granted entry.

Please be advised that participants are responsible for covering the price of any tour or other additional services.



**10:00–18:00**

5A, Fermskaya  
Doroga, Pushkin

Museums, exhibitions

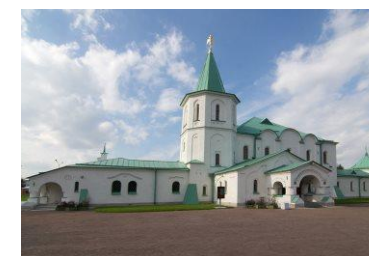
**Russia in the Great War Museum**

This is the first museum in Russia dedicated to the country's experiences during the tragic period of World War I (1914–1917). It is located in the Martial Chamber, a building conceived by Emperor Nicholas II as a pantheon of military glory.

The exhibition showcases real munitions and day-to-day objects used by those involved in World War I, as well as print and photographic materials from the Tsarskoye Selo Museum and Heritage Site collection.

Premium Package participants may present their badge to be granted entry.

Please be advised that participants are responsible for covering the price of any tour or other additional services.



**10:00–18:00**

Arsenal Pavilion,  
Aleksander Park,  
Pushkin

Museums, exhibitions

**Exhibition: 'The Arsenal of Tsarskoye Selo: The Imperial Arms Collection'**

The exhibition, curated in collaboration with the State Hermitage Museum, was first opened in 2016. Items on display include the imperial collection of oriental cold steel and firearms from the 18th and 19th centuries and European arms and munitions from the 16th to 17th centuries, including armour, helmets, halberds, swords, and equestrian equipment. The State Hermitage Museum has contributed some of its own rare items for temporary display, including 16th century armour from the collection of Nicholas I.

Premium Package participants may present their badge to be granted entry.

Please be advised that participants are responsible for covering the price of any tour or other additional services.





**10:00–19:00**2–4, Ulitsa  
Kuibysheva

Museums, exhibitions

**The Museum of Political History of Russia**

The museum's central exhibition 'Man and State Power in Russia from the 19th to the 21st Centuries' paints a picture of Russia's political history from Catherine II to the modern day. The exhibition's twelve sections reflect key events in the country's history: shifting political systems and wars, revolutions and reforms, periods of liberalization and increasing authoritarianism. Exhibits, art objects, eyewitness testimonies, and 'voices of history' illustrate how the actions of those in power and ordinary people helped shape the course of history.

The exhibition 'Special Operations Museum' was opened to in honour of the 100-year anniversary of the Museum of Political History of Russia (est. 1919). It is dedicated to the museum's history, its survival in the face of repression and wars, its renaissance during the Thaw, and how it changed its fate riding the groundswell of the Perestroika.

The exhibition 'The Leningrad Affair: The City and the People' presents the political biographies of the city's functionaries, victims of the repressions of 1949–1952.

Premium Package participants may present their badge to be granted entry.

Please be advised that participants are responsible for covering the price of any tour or other additional services.

**10:00–18:00**Kameronova Gallery,  
Catherine Park,  
Pushkin

Museums, exhibitions

**Exhibition: 'Tsarskoye Selo. On the Eve of 1917'**

This exhibition describes life at the Tsarskoye Selo residence from February to October 1917, during the period between two revolutions. The time when the age of monarchy draws to a close and a new age, full of revolutionary fervour, rises in its place. The Tsarskoye Selo residence still exists, but has lost its imperial status. The last Russian Emperor and his family still live in Alexander Palace, but he is now Citizen Romanov and is under house arrest by the order of the Russian Provisional Government. In the spring of 1917, the Tsarskoye Selo imperial palaces are being surveyed by an art and history commission tasked with inventorying nationalized property and creating a museum out of the past residence.

Premium Package participants may present their badge to be granted entry.

Please be advised that participants are responsible for covering the price of any tour or other additional services.

**10:00–20:00**Elena Tsvetkova  
Jewellery House (18,  
English Embankment)

Museums, exhibitions

**'The Greatest Artists of Russia' Exhibition**

In the Elena Tsvetkova Jewellery House gallery, the project 'Contemporary Heritage of Russia', with the support of the movement 'We Love Russia', will present the works of the greatest contemporary artists, who have received the Gokhran of Russia award. Their works have been exhibited in the Gokhran of Russia, the Moscow Kremlin museums, the Diamond Fund of Russia, the State Historical Museum, the Hermitage, the Russian Museum and other museums across the country.

Participants need to show their badge to gain access to the exhibition.





**10:30–22:00**

2, Lermontovsky  
Prospekt

Museums, exhibitions

### **Excursion to the Grand Choral Synagogue of St. Petersburg**

The Grand Choral Synagogue, one of the largest and most beautiful in Europe, has been a quintessential symbol of multinational St. Petersburg for more than 120 years. It is the centre of gravity of the cultural, religious and business life of Russia's second largest city. The evening tour on 7 June is combined with a celebratory banquet to mark the Sabbath.

Excursion schedule:

5 June: 10:30–19:00, 20:30–22:00

6 June: 10:30–19:00, 20:30–22:00

7 June: 10:30–18:00, 18:00–22:00

Interested Forum participants must register in advance through the [personal web office](#).



**10:30–20:00**

The General Staff  
Building of the State  
Hermitage Museum  
(2, Palace Square)

Museums, exhibitions

### **Exhibition: Artificial Intelligence and Intercultural Dialogue**

The Russian Direct Investment Fund (RDIF), the Russian Federation's sovereign wealth fund, and the State Hermitage Museum present an exhibition of works by modern artists from around the world, dedicated to the creative capabilities of artificial intelligence (AI).

AI-based contemporary art has received global recognition following the sale of a painting created by the French art group Obvious, at Christie's Auction House on 25 October 2018. Obvious' artists used a generative adversarial network (GAN) to mimic the creative process of human intelligence.

The exhibition also features the work of Saudi Arabian artist Lulwa Al-Homoud, who has used AI to develop a new abstract graphical language based on the Arabic alphabet; Italian artist Davide Quayola, who presents an AI 'perception' of classic impressionist paintings; and Turkish artist Refik Anadol, whose work Machine hallucinations was created by analysing 100,000 photographs of architecture.

The exhibition will feature the work of 14 artists and art collectives from ten countries.

A ticket is required to attend the exhibition and can be purchased at one of the museum's ticket offices.



**10:30–17:00**

2, Sadovaya Ulitsa,  
Pushkin

Museums, exhibitions

### **Memorial Lyceum Museum**

Alexander Pushkin studied at the Imperial Lyceum of Tsarskoye Selo from 1811 to 1817. The school's grand hall, library (featuring original books from the Lyceum's collection, some of which were a gift to the school from Alexander I), classrooms, and dormitories all help re-create the atmosphere in which the students of this privileged educational establishment lived and studied.

Forum participants may present their badge to be granted entry.

Please be advised that participants are responsible for covering the price of any tour or other additional services.



**10:30–17:00**

12, Naberezhnaya  
Reki Moiki

Museums, exhibitions

### **Alexander Pushkin Museum and Memorial Apartment**

St. Petersburg's only Alexander Pushkin Museum and Memorial Apartment is dedicated to the final, most dramatic period of the poet's life. The museum houses Pushkin's writing table and chair, the sofa on which he died, a lock of his hair, and his death mask.

Forum participants may present their badge to be granted entry.

Please be advised that participants are responsible for covering the price of any tour or other additional services.



**10:30–17:00**

2/19, Pushkinskaya  
Ulitsa, Pushkin

Museums, exhibitions

### **Pushkin Memorial Dacha Museum**

The Pushkin Memorial Dacha Museum is located in a single-story wooden building, the original architectural façade of which has been mostly preserved. The poet Alexander Pushkin and his young wife lived in this building from May to October 1831. This dacha (summer home) was the place where he penned The Tale of Tsar Saltan, 'Onegin's Letter to Tatyana,' and other works.

Forum participants may present their badge to be granted entry.

Please be advised that participants are responsible for covering the price of any tour or other additional services.



**10:30–17:00**

12, Naberezhnaya  
Reki Moiki

Museums, exhibitions

### **Literary and monographic exhibition 'A. S. Pushkin: His Life and Work'**

The halls of the literary and monographic exhibition 'A. S. Pushkin: His Life and Work' feature the famous 'Portrait of Alexander Pushkin' by Vasily Tropinin, depictions of the poet and his contemporaries made during their lifetimes, first editions of his works, memorial items, and a miniature replica of the Naschokin House. The Green Hall contains the exhibition 'Portraits of A. S. Pushkin,' which features over 100 paintings, graphic representations, and sculptures from the museum's vast collection. The exhibition includes Pushkin's sketches from the margins of his manuscripts, famous portraits of the poet by contemporaries such as Vasily Tropinin and Karl Bryullov, and works by the great masters of the late 19th to 20th centuries, including Ilya Repin, Ivan Aivazovsky, Valentin Serov, Konstantin Somov, Boris Kustodiev, Vasili Shukhaev, Paolo Troubetzkoy, Mikhail Anikushin, and others.

Forum participants may present their badge to be granted entry.

Please be advised that participants are responsible for covering the price of any tour or other additional services.



**11:00–19:00**

Peter and Paul  
Fortress, Nevsky  
Curtain Wall

Museums, exhibitions

**Exhibition: 'A story that will continue'**

This exhibition is about the artistic journey of the Imperial Porcelain Factory, the renowned St. Petersburg porcelain producer, from its foundation in 1744 to the present day: about the origin of porcelain in Russia, the invention and development of new production technologies and decorative techniques, the factory's craftsmen, and the works they create today, which bring prestige to Russian art. In the exhibition, more than 1,300 porcelain items of the 18th–21st centuries, all stamped with the seal of the Imperial Porcelain Factory, will enable visitors to trace the main trends in the art of Russian porcelain over almost three centuries.

Forum participants may present their badge to be granted entry.

Please note that participants are responsible for covering the price of excursions or other additional services.

**11:00–18:00**

Peter the Great  
Museum of  
Anthropology and  
Ethnography of the  
Russian Academy of  
Sciences (the  
Kunstkamera) (3,  
Universitetskaya  
Naberezhnaya)

Museums, exhibitions

**Exhibition: 'Arctic Nomads: The Art of Movement'**

A variety of multimedia materials collected during research expeditions to Yamal, Chukotka, and the Kola Peninsula accompany 95 rare items from the Museum of Anthropology and Ethnography's collection. The exhibition is a vivid depiction of the current nomadic traditions of the indigenous peoples of the Arctic.

Forum participants may present their badge to be granted entry.

Please be advised that participants are responsible for covering the price of any tour or other additional services.

**15:00–16:00**

1/33, 4-ya  
Krasnoarmeyskaya  
Ulitsa

Museums, exhibitions

**Tour of the Plekhanov House of the National Library of Russia**

This tour is intended to show guests items from the rooms of the Free Economic Society and the Geneva apartment of the Plekhanovs. Guests will be able to see particularly interesting documents from the library's collection: books featuring handwritten notes by Georgi Plekhanov, publications featuring the autographs of famous people from that era, and the stamps of political and social organization libraries, which all come together to tell the story of how Georgi Plekhanov's personal library was formed. The tour will be given in Russian.

Interested Forum participants must register in advance through the [personal web office](#).

**15:00–16:00**

165/2, Moskovsky  
Prospekt

Museums, exhibitions

**Tour of the New Building of the National Library of Russia**

During this tour, knowledgeable guides will describe the contents of the library's collections, catalogues, reading room locations, and services offered to library visitors.

Particular attention will be paid to new storage and preservation technologies.

The tour will be given in Russian.

Interested Forum participants must register in advance through the [personal web office](#).



**15:00–16:30**

18, Sadovaya Ulitsa

Museums, exhibitions

**Tour of the Main Building of the National Library of Russia**

The National Library of Russia is the oldest public library in Russia. It was founded at the behest of Catherine II in 1795.

The library's main building occupies an entire city block located in between Sadovaya Ulitsa, Nevsky Prospekt, and Ostrovsky Square.

During the tour guests will learn about the library's history, famous staff members, and some of its unique collections. The tour programme will include visits to historical rooms that are usually not accessible to library visitors, including the Russian Books Collection, the Rare Books collection, Voltaire's Library, and the Manuscripts collection.

Interested Forum participants must register in advance through the [personal web office](#).

**15:00–17:00**

St. Petersburg  
Stieglitz State  
Academy of Art and  
Design (15, Solyanoy  
Pereulok)

Museums, exhibitions

**Tour of the Exhibition 'Golden Thread – Road of Creativity'**

The 4th International Biennale of Hot Enamel Art 'Golden Thread – Road of Creativity' will be held in the halls of the Stieglitz Academy educational Museum of Applied Art. The exhibition will include works by contemporary enamel artists, professionals from various countries, and teachers and students from Russian and international universities.

The exhibition will present artistic traditions and experimental techniques used to create original works of art using hot enamel techniques, showcasing the diverse approaches of a number of artists and schools.

In addition to this exhibition, guests will also be able to peruse the works of the Museum of Applied Art's permanent collection.

Tours are held twice a day, starting at 15:00 and 16:00.

Interested Forum participants must register in advance through the [personal web office](#).

**16:00–18:00**

Boris Yeltsin  
Presidential Library (3,  
Senate Square)

Museums, exhibitions

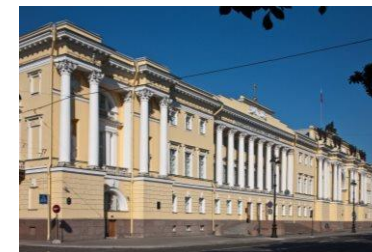
**Tour: A 21st Century Library in the Historical Synod Building**

The Boris Yeltsin Presidential Library is the largest information, cultural, and educational centre in Russia. The tour will guide guests through the historical interiors of the Synod building and the contemporary halls of the Presidential Library, which were created for holding social and state events. The latter include a conference hall and a transforming multimedia hall, which features the latest 3D-enabled technologies. Part of the excursion is a presentation of the library's electronic collection, which is stored in the Electronic Reading Room and on the Library's Internet portal. The collection includes materials on Russian history, the theory and practice of Russian statehood, the Russian language, literature, geography, and law. Guests will learn about the temporary and permanent exhibitions located within Constitution Hall, which is also home to the singular inaugural copy of the Constitution of the Russian Federation.

Tours are held twice a day, starting at 16:00 and 17:00.

Tour groups gather in the main foyer of the Presidential Library before meeting their guides.

Forum participants may present their badge to be granted entry.





**16:00–20:00**

Institute of Oriental Manuscripts of the Russian Academy of Sciences (18, Dvortsovaya Embankment)

Museums, exhibitions

**Exhibition: 'The Manuscript Treasures of the East on the Banks of the Neva River'**

Institute of Oriental Manuscripts presents a selection of manuscript masterpieces from the East. The Institute houses one of the largest collections of manuscripts in the world – the largest in Russia – with over 115,000 items in 65 modern and dead languages. This unique collection is located in the luxurious interior of the Novo-Mikhailovsky (New Michael) Palace, a vivid example of 19th century palace architecture.

Forum participants may present their badge to be granted entry.



**18:00–20:00**

Shuvalovsky Proezd of the State Hermitage Museum

Special events, receptions

**Reception hosted by the Governor of St. Petersburg in celebration of the St. Petersburg International Economic Forum**

A comfortable patio with a buffet space and business negotiation zone will be organized on the territory of the State Hermitage Museum, located just a few minutes away from Palace Square.

At 19:00, Acting Governor of St. Petersburg Alexander Beglov will give a welcome speech to event guests.

This event will turn the State Hermitage Museum's Shuvalovsky Proezd into a unique promenade featuring the musical stylings of DJ Kosinus, a musician and showman with exquisite musical taste and precise technique, leaving listeners with unforgettable memories after each performance.

The guest entrance for this event is located on Millionnaya Ulitsa

This event is open to Premium Package participants by invitation only.

More information about this event can be found in the [personal web office](#).



**18:30–21:45**

2, Moshkov Pereulok

Theatrical performances, concerts

**The 'Faceless' Immersive Show**

'Faceless' is an alternate reality theatrical performance. There are no stages or curtains, and the main character is played by the viewer themselves.

In this immersive performance, theatregoers become a part of the action, space, and atmosphere and interact with characters that will help them seek answers to their innermost questions.

'Faceless' takes place over four floors of an over 300-year-old mansion in the heart of St. Petersburg.

Viewers will have the chance to meet 16 characters, traverse over 50 rooms, and, most importantly, see one of three simultaneous endings.

The script of 'Faceless' was inspired by the play 'Ghosts' by the playwright Henrik Ibsen. The performance is a prequel, describing the strange happenings that occurred five hours before the events of the play.

Directors: Migel, Mia Zanette.

A ticket is required to attend the performance and can be ordered via the [personal web office](#).

Participants are responsible for covering the price of attendance.





**19:00–21:30**

Mariinsky Theatre (1,  
Teatralnaya  
Ploshchad)

Theatrical performances, concerts

**Le Corsaire**

Ballet in three acts with a prologue and epilogue.

Music by Adolphe Adan, Cesare Pugni, Léo Delibes, Riccardo Drigo and Pyotr Oldenburgsky.

Libretto by Henri Vernoy de Saint-Georges and Joseph Mazilier, edited by Yuri Slonimsky and Pyotr Gusev.

Choreography by Pyotr Gusev (1987) based on the composition and choreography of Marius Petipa.

A ticket is required to attend the event and can be ordered via the [personal web office](#).

Participants are responsible for covering the price of attendance.



**19:00–22:00**

St. Petersburg Music  
Hall Theatre (4,  
Alexandrovsky Park)

Theatrical performances, concerts

**Musical: The Great Gatsby**

The musical The Great Gatsby premiered in October 2018. The St. Petersburg Music Hall was the first theatre in Russia and the world to stage a musical based on F. Scott Fitzgerald's masterpiece. This classic story about the Jazz Age, with its superficial frivolity, quests for wealth, unattainable dreams, and illusory goals in the face of all-encompassing love and idealism comes to life as a vivid and expressive piece of musical theatre on the Music Hall stage. This tale of an unhappy love unfolds against a backdrop of magnificent decorations, phenomenal video installations, stylish costumes, and original stage directions.

A ticket is required to attend the event and can be ordered via the [personal web office](#).

Participants are responsible for covering the price of attendance.



**19:00–21:30**

Jazz Philharmonic Hall  
(27, Zagorodny  
Prospekt)

Theatrical performances, concerts

**A Night of Jazz Guitar, Gasan Bagirov and his band**

Gasan Bagirov is one of the most striking performers in St. Petersburg, a true virtuoso of several jazz styles as well as flamenco. The programme includes famous musical pieces presented in various styles and special arrangements.

A ticket is required to attend the event and can be ordered via the [personal web office](#).

Participants are responsible for covering the price of attendance.



**19:00–21:00**

St. Petersburg State  
Academic Capella (20,  
Naberezhnaya Reki  
Moiki)

Theatrical performances, concerts

**Shakespeare in music. A Midsummer Night's Dream.**

A Midsummer Night's Dream performed by St. Petersburg Symphony Orchestra (Conductor: Sergei Stadler) is a romantic comedy and the most amorous of William Shakespeare's plays. The reality becomes the most peculiar following the logic of dreams. The programme is built around the famous suite by Mendelssohn inspired by the magical world of fairies and elves. Masterpieces by Wagner and Mahler will become a special addition to the programme: although unrelated to the play, these works will help create the unforgettable atmosphere of a midsummer night.

A ticket is required to attend the event and can be ordered via the [personal web office](#).  
Participants are responsible for covering the price of attendance.



**19:00–21:00**

Krysha Ballroom,  
Belmond Grand Hotel  
Europe (1/7,  
Mikhailovskaya Ulitsa)

Special events, receptions

**Indian Reception**

Guests at the reception will enjoy a taste of Indian culture, art, and cuisine.

Premium Package participants may attend the event by invitation.  
Detailed information is available in your [personal web office](#).



**19:30–22:30**

Mikhailovsky Theatre  
(1, Ploschad Iskusstv)

Theatrical performances, concerts

**Ballet: Don Quixote**

Colourful, vibrant, direct, spontaneous: all these epithets can be applied to Don Quixote, but none of them can fully convey the sense of joy that the ballet invariably arouses in the audience. The red capes of the toreadors, the strumming of guitars, the clicking of castanets, coquettish glances from behind open fans... The enchanting levity of the 'ballet of Spain' surges onto the Mikhailovsky Theatre stage. Each performer interprets this ballet in their own way. While it demands virtuosity and stamina, the dancers are given complete freedom of choice in the way they act the parts. It is possible to depict the sincerity and straightforwardness of the characters or present them as cunning deceivers; place an emphasis on simple domestic details, or portray fiery passions. The permutations are endless, and therein lies one of the secrets of the ballet's phenomenal popularity.

A ticket is required to attend the event and can be ordered via the [personal web office](#).

Participants are responsible for covering the price of attendance.



**19:30–21:00**

Mariinsky Theatre  
Concert Hall (20,  
Ulitsa Pisareva – entry  
from 37, Ulitsa  
Dekabristov)

Theatrical performances, concerts

**Teatro Carlo Felice Philharmonic Orchestra (Genoa, Italy)**

Performers:

Teatro Carlo Felice Philharmonic Orchestra

Conductor: Giuseppe Acquaviva

Programme:

Gioachino Rossini

Overture to the opera Il signor Bruschino

Overture to the opera L'italiana in Algeri

Overture to the opera La cenerentola

Overture to the opera Il barbiere di Siviglia

Domenica Cimarosa

Overture to the opera Il matrimonio segreto

Niccolò Paganini

Violin Concerto No.1 in D major, Op. 6

A ticket is required to attend the event and can be ordered via the [personal web office](#).

Participants are responsible for covering the price of attendance.



**20:00–22:00**

Palace Square

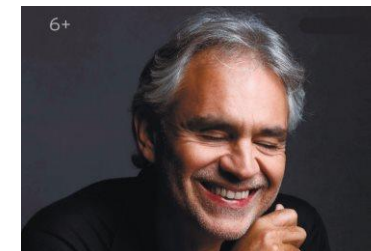
Theatrical performances, concerts

**SPIEF Music Fest: From Classics to Rock**

The audience will get a chance to enjoy classical pieces performed by legendary Andrea Bocelli and Aida Garifullina (Vienna State Opera).

This event is open to Premium Package participants by invitation only.

More information about this event can be found in the [personal web office](#).



**20:00–22:30**

Alexandrinsky Theatre  
(6, Ploshchad  
Ostrovskogo)

Theatrical performances, concerts

**Charity Gala concert featuring opera and ballet stars**

Opera and ballet stars will take part in a charity concert to support children and young people with severe disabilities.

This year, the audience will enjoy the following ballet performers: Farukh Ruzimatov, premier danseur of the Mikhailovsky Theatre; Leonid Sarafanov, leading dancers of the Mariinsky Theatre; Viktoria Tereshkina, Ekaterina Kondaurova, Oksana Skorik, Daria Pavlenko, Olesya Novikova, Igor Kolb, Andrey Ermakov, Alexander Sergeev, Alexey Timofeev, Roman Belyakov, as well as Vaganova Ballet Academy students. The opera programme will feature Yusif Eyvazov, soloists of the Mariinsky Theatre Ekaterina Semenchuk, Maria Bayankina, Anastasia Kalagina, Oksana Shilova, Kikoria Yastrebova, Yuri Vorobyov, and Dmitry Voropaev. Taurida State Symphony Orchestra of Leningrad Region will accompany the concert.

A ticket is required to attend the event and can be ordered via the [personal web office](#).

Participants are responsible for covering the price of attendance.





June 8, 2019

**07:00–23:00**7, Sadovaya Ulitsa,  
Pushkin

Museums, exhibitions

**Catherine and Alexander Parks**

Parks are as important as the palace complex to the ambiance of the Tsarskoye Selo part of the city of Pushkin. The two most important of these are Catherine Park and Alexander Park, named after the palaces located within their territories.

Catherine Park is composed of two main sections: the Regular (Old Garden) Park and the Landscape (English) Park. The Regular Park is a formal garden symmetrically organizing the space around the palace, composed of a strict system of alleys, platforms, pavilions, and sculptures.

Alexander Park spans over approximately 200 ha and adjoins the parade ground (courtyard) of the Great Tsarskoye Selo (Catherine) Palace and can also be split into a regular (New Garden) park and a landscape park.

Premium Package participants may present their badge to be granted entry.

Please be advised that participants are responsible for covering the price of any tour or other additional services.

**10:00–17:30**The Russian Museum,  
Benois Wing (2,  
Naberezhnaya Kanala  
Griboyedova)

Museums, exhibitions

**'Three St. Petersburg Collections' Exhibition**

The exhibition displays paintings, drawings, sculptures, theatrical decorative and ornamental art and the coins of three private collections in St. Petersburg: the Paleev family, Vladimir Berezovsky and Kirill and Julia Naumov. The exposition introduces practically unknown works of the greatest Russian artists of the 19th–20th centuries: Ivan Aivazovsky, Nathan Altman, Léon Bakst, Alexandre Benois, Mikhail Vrubel, Natalia Goncharova, Boris Kustodiev, Konstantin Korovin, Kuzma Petrov-Vodkin, Ilya Repin, Zinaida Serebriakova, Konstantin Somov, and others.

Premium package participants need to show their badge to gain access to the exhibition.

Please note that the museum tour and other additional services are paid by the participant separately.

**10:00–17:30**The Russian Museum,  
Mikhailovsky Castle  
(2, Sadovaya Ulitsa)

Museums, exhibitions

**'Nicholas I' Exhibition**

The exhibition from the The Saga of the Romanovs cycle explores the personality of Nicholas I alongside his foreign policy, ideology, influence over national culture and society as a whole, and life in the imperial court and the royal family, as reflected in paintings, drawings, coins and decorative and applied arts. The exposition includes numerous ceremonial portraits of Emperor Nicholas I, his associates and members of the royal family, created by artists and sculptors of the calibre of George Dow, Franz Krüger, Orest Kiprensky, Fyodor Tolstoy, and others. The paintings and drawings, ceremonial monumental vases and dinnerware, furniture, bronzeware, rare coins, and the many other furnishings that make up the exhibition give a sense of the artistic life of a prosperous country, and of the sophisticated interiors of the royal residences and the life of the highest court.

Premium package participants need to show their badge to gain access to the exhibition.

Please note that the museum tour and other additional services are paid by the participant separately.





**10:00–17:30**

The Russian Museum,  
Mikhailovsky Palace,  
Garden Vestibule (4,  
Inzhenernaya Ulitsa)

Museums, exhibitions

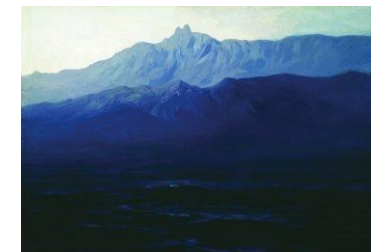
**'Crimea Through the Paintings of Arkhip Kuindzhi' Exhibition**

The Russian Museum contains numerous works of art created in Crimea and received as a gift from the Arkhip Kuindzhi Society. They follow the soul searching and artistic quest of the painter through his study of colour relationships and contrasts and the generalisation of form. He contemplated the movement of clouds over the sea and steppe, atmospheric fluctuations during the day, fog and sunsets.

The exhibition in the Garden Vestibule of the Mikhailovsky Palace presents selected paintings by Arkhip Kuindzhi devoted to the natural landscapes of Crimea. In his paintings, as in all creative heritage, he conveyed the diversity of the beautiful and eternal in nature, as seen by his admiring eyes.

Premium package participants need to show their badge to gain access to the exhibition.

Please note that the museum tour and other additional services are paid by the participant separately.



**10:00–20:00**

Elena Tsvetkova  
Jewellery House (18,  
English Embankment)

Museums, exhibitions

**'The Greatest Artists of Russia' Exhibition**

In the Elena Tsvetkova Jewellery House gallery, the project 'Contemporary Heritage of Russia', with the support of the movement 'We Love Russia', will present the works of the greatest contemporary artists, who have received the Gokhran of Russia award. Their works have been exhibited in the Gokhran of Russia, the Moscow Kremlin museums, the Diamond Fund of Russia, the State Historical Museum, the Hermitage, the Russian Museum and other museums across the country.

Participants need to show their badge to gain access to the exhibition.



**10:00–20:15**

Shuvalov Palace (21,  
Naberezhnaya Reki  
Fontanki)

Museums, exhibitions

**Fabergé Museum**

The museum's permanent exhibition boasts the world's largest collection of works by the famous Russian jeweller Carl Fabergé. The most treasured items in the collection are nine Easter eggs created by House of Fabergé masters for the last two Russian emperors Alexander III and Nicholas II. In addition to these internationally known masterpieces, guests will discover the surprising breadth of the jewellery work done by Fabergé and other famous Russian jewellers from the 19th to early 20th centuries: from tsars' snuff boxes and cigarette cases to carved stone miniatures, jewellery, Russian enamel art, decorative silverware, and precious icons.

Premium Package participants may present their badge to be granted entry.

Please be advised that participants are responsible for covering the price of any tour or other additional services.



**10:00–18:00**Kameronova Gallery,  
Catherine Park,  
Pushkin

Museums, exhibitions

**Exhibition: 'Tsarskoye Selo. On the Eve of 1917'**

This exhibition describes life at the Tsarskoye Selo residence from February to October 1917, during the period between two revolutions. The time when the age of monarchy draws to a close and a new age, full of revolutionary fervour, rises in its place. The Tsarskoye Selo residence still exists, but has lost its imperial status. The last Russian Emperor and his family still live in Alexander Palace, but he is now Citizen Romanov and is under house arrest by the order of the Russian Provisional Government. In the spring of 1917, the Tsarskoye Selo imperial palaces are being surveyed by an art and history commission tasked with inventorying nationalized property and creating a museum out of the past residence.

Premium Package participants may present their badge to be granted entry.

Please be advised that participants are responsible for covering the price of any tour or other additional services.

**10:00–17:00**2–4, Ulitsa  
Kuibysheva

Museums, exhibitions

**The Museum of Political History of Russia**

The museum's central exhibition 'Man and State Power in Russia from the 19th to the 21st Centuries' paints a picture of Russia's political history from Catherine II to the modern day. The exhibition's twelve sections reflect key events in the country's history: shifting political systems and wars, revolutions and reforms, periods of liberalization and increasing authoritarianism. Exhibits, art objects, eyewitness testimonies, and 'voices of history' illustrate how the actions of those in power and ordinary people helped shape the course of history.

The exhibition 'Special Operations Museum' was opened in honour of the 100-year anniversary of the Museum of Political History of Russia (est. 1919). It is dedicated to the museum's history, its survival in the face of repression and wars, its renaissance during the Thaw, and how it changed its fate riding the groundswell of the Perestroika.

The exhibition 'The Leningrad Affair: The City and the People' presents the political biographies of the city's functionaries, victims of the repressions of 1949–1952.

Premium Package participants may present their badge to be granted entry.

Please be advised that participants are responsible for covering the price of any tour or other additional services.

**10:00–18:00**Arsenal Pavilion,  
Aleksander Park,  
Pushkin

Museums, exhibitions

**Exhibition: 'The Arsenal of Tsarskoye Selo: The Imperial Arms Collection'**

The exhibition, curated in collaboration with the State Hermitage Museum, was first opened in 2016. Items on display include the imperial collection of oriental cold steel and firearms from the 18th and 19th centuries and European arms and munitions from the 16th to 17th centuries, including armour, helmets, halberds, swords, and equestrian equipment. The State Hermitage Museum has contributed some of its own rare items for temporary display, including 16th century armour from the collection of Nicholas I.

Premium Package participants may present their badge to be granted entry.

Please be advised that participants are responsible for covering the price of any tour or other additional services.



**10:00–18:00**

5A, Fermskaya  
Doroga, Pushkin

Museums, exhibitions

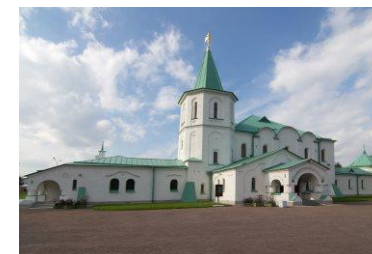
### **Russia in the Great War Museum**

This is the first museum in Russia dedicated to the country's experiences during the tragic period of World War I (1914–1917). It is located in the Martial Chamber, a building conceived by Emperor Nicholas II as a pantheon of military glory.

The exhibition showcases real munitions and day-to-day objects used by those involved in World War I, as well as print and photographic materials from the Tsarskoye Selo Museum and Heritage Site collection.

Premium Package participants may present their badge to be granted entry.

Please be advised that participants are responsible for covering the price of any tour or other additional services.



**10:30–17:00**

2, Sadovaya Ulitsa,  
Pushkin

Museums, exhibitions

### **Memorial Lyceum Museum**

Alexander Pushkin studied at the Imperial Lyceum of Tsarskoye Selo from 1811 to 1817. The school's grand hall, library (featuring original books from the Lyceum's collection, some of which were a gift to the school from Alexander I), classrooms, and dormitories all help re-create the atmosphere in which the students of this privileged educational establishment lived and studied.

Forum participants may present their badge to be granted entry.

Please be advised that participants are responsible for covering the price of any tour or other additional services.



**10:30–17:00**

The General Staff  
Building of the State  
Hermitage Museum  
(2, Palace Square)

Museums, exhibitions

### **Exhibition: Artificial Intelligence and Intercultural Dialogue**

The Russian Direct Investment Fund (RDIF), the Russian Federation's sovereign wealth fund, and the State Hermitage Museum present an exhibition of works by modern artists from around the world, dedicated to the creative capabilities of artificial intelligence (AI).

AI-based contemporary art has received global recognition following the sale of a painting created by the French art group Obvious, at Christie's Auction House on 25 October 2018. Obvious' artists used a generative adversarial network (GAN) to mimic the creative process of human intelligence.

The exhibition also features the work of Saudi Arabian artist Lulwa Al-Homoud, who has used AI to develop a new abstract graphical language based on the Arabic alphabet; Italian artist Davide Quayola, who presents an AI 'perception' of classic impressionist paintings; and Turkish artist Refik Anadol, whose work Machine hallucinations was created by analysing 100,000 photographs of architecture.

The exhibition will feature the work of 14 artists and art collectives from ten countries.

A ticket is required to attend the exhibition and can be purchased at one of the museum's ticket offices.



**10:30–17:00**

12, Naberezhnaya  
Reki Moiki

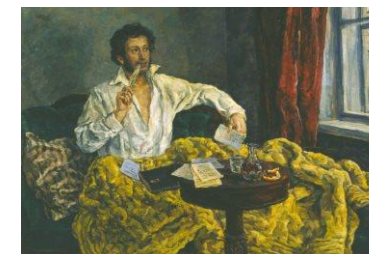
Museums, exhibitions

**Literary and monographic exhibition 'A. S. Pushkin: His Life and Work'**

The halls of the literary and monographic exhibition 'A. S. Pushkin: His Life and Work' feature the famous 'Portrait of Alexander Pushkin' by Vasily Tropinin, depictions of the poet and his contemporaries made during their lifetimes, first editions of his works, memorial items, and a miniature replica of the Naschokin House. The Green Hall contains the exhibition 'Portraits of A. S. Pushkin,' which features over 100 paintings, graphic representations, and sculptures from the museum's vast collection. The exhibition includes Pushkin's sketches from the margins of his manuscripts, famous portraits of the poet by contemporaries such as Vasily Tropinin and Karl Bryullov, and works by the great masters of the late 19th to 20th centuries, including Ilya Repin, Ivan Aivazovsky, Valentin Serov, Konstantin Somov, Boris Kustodiev, Vasili Shukhaev, Paolo Troubetzkoy, Mikhail Anikushin, and others.

Forum participants may present their badge to be granted entry.

Please be advised that participants are responsible for covering the price of any tour or other additional services.



**10:30–17:00**

12, Naberezhnaya  
Reki Moiki

Museums, exhibitions

**Alexander Pushkin Museum and Memorial Apartment**

St. Petersburg's only Alexander Pushkin Museum and Memorial Apartment is dedicated to the final, most dramatic period of the poet's life. The museum houses Pushkin's writing table and chair, the sofa on which he died, a lock of his hair, and his death mask.

Forum participants may present their badge to be granted entry.

Please be advised that participants are responsible for covering the price of any tour or other additional services.



**10:30–17:00**

2/19, Pushkinskaya  
Ulitsa, Pushkin

Museums, exhibitions

**Pushkin Memorial Dacha Museum**

The Pushkin Memorial Dacha Museum is located in a single-story wooden building, the original architectural façade of which has been mostly preserved. The poet Alexander Pushkin and his young wife lived in this building from May to October 1831. This dacha (summer home) was the place where he penned 'The Tale of Tsar Saltan,' 'Onegin's Letter to Tatyana,' and other works.

Forum participants may present their badge to be granted entry.

Please be advised that participants are responsible for covering the price of any tour or other additional services.





**11:00–19:00**

Peter and Paul  
Fortress, Nevsky  
Curtain Wall

Museums, exhibitions

**Exhibition: 'A story that will continue'**

This exhibition is about the artistic journey of the Imperial Porcelain Factory, the renowned St. Petersburg porcelain producer, from its foundation in 1744 to the present day: about the origin of porcelain in Russia, the invention and development of new production technologies and decorative techniques, the factory's craftsmen, and the works they create today, which bring prestige to Russian art. In the exhibition, more than 1,300 porcelain items of the 18th–21st centuries, all stamped with the seal of the Imperial Porcelain Factory, will enable visitors to trace the main trends in the art of Russian porcelain over almost three centuries.

Forum participants may present their badge to be granted entry.

Please note that participants are responsible for covering the price of excursions or other additional services.

**11:00–17:00**

122, Prospekt  
Obukhovskoy  
Oborony

Museums, exhibitions

**Obukhov Factory Museum**

The Obukhov Steel Foundry Museum was founded at the end of the 19th century. It was located in the factory laboratory building and existed until the end of the 1920s. Nearly 50 years later, on 20 May 1976, the factory reopened the Museum of Labour, Revolutionary, and Military Glory, which was created on the initiative of the factory's veterans and union organizations. In May 2014, as part of a large-scale project to create the North-West Regional Centre of Almaz – Antey Corp., a separate two-story building was allocated as the plant's museum. The museum has eight rooms of permanent exhibition. The building, which now houses the museum, is a cultural heritage site. Designed by civil engineer Fedor Lumberg, it was built in 1896–1897 as the 'House of the hospital administration with the Obukhov Steel Plant clinic' with the funds provided by Pavel Obukhov, one of the factory's founders.

In the building of the new museum and exhibition complex there is an interactive layout of the Obukhov plant of the late 19th and early 20th centuries, created by the joint efforts of the Museum of History of the Obukhov Plant and the founders of the legendary Grand Maket Rossiya project. The model layout represents the operation of the factory's production facilities, the passers-by on the Shlisselburg road (now Obukhovskoy Oborony Avenue) going about their business, and the life of workers.

Forum participants may present their badge to be granted entry.

Please be advised that participants are responsible for covering the price of any tour or other additional services.

**11:00–18:00**

Peter the Great  
Museum of  
Anthropology and  
Ethnography of the  
Russian Academy of  
Sciences (the  
Kunstkamera) (3,  
Universitetskaya  
Naberezhnaya)

Museums, exhibitions

**Exhibition: 'Arctic Nomads: The Art of Movement'**

A variety of multimedia materials collected during research expeditions to Yamal, Chukotka, and the Kola Peninsula accompany 95 rare items from the Museum of Anthropology and Ethnography's collection. The exhibition is a vivid depiction of the current nomadic traditions of the indigenous peoples of the Arctic.

Forum participants may present their badge to be granted entry.

Please be advised that participants are responsible for covering the price of any tour or other additional services.



**12:00–18:00**

Institute of Oriental Manuscripts of the Russian Academy of Sciences (18, Dvortsovaya Embankment)

Museums, exhibitions

**Exhibition: 'The Manuscript Treasures of the East on the Banks of the Neva River'**

Institute of Oriental Manuscripts presents a selection of manuscript masterpieces from the East. The Institute houses one of the largest collections of manuscripts in the world – the largest in Russia – with over 115,000 items in 65 modern and dead languages. This unique collection is located in the luxurious interior of the Novo-Mikhailovsky (New Michael) Palace, a vivid example of 19th century palace architecture.

Forum participants may present their badge to be granted entry.



**13:00–16:00**

Mikhailovsky Theatre (1, Ploschad Iskusstv)

Theatrical performances, concerts

**Ballet: Don Quixote**

Colourful, vibrant, direct, spontaneous: all these epithets can be applied to Don Quixote, but none of them can fully convey the sense of joy that the ballet invariably arouses in the audience. The red capes of the toreadors, the strumming of guitars, the clicking of castanets, coquettish glances from behind open fans... The enchanting levity of the 'ballet of Spain' surges onto the Mikhailovsky Theatre stage. Each performer interprets this ballet in their own way. While it demands virtuosity and stamina, the dancers are given complete freedom of choice in the way they act the parts. It is possible to depict the sincerity and straightforwardness of the characters or present them as cunning deceivers; place an emphasis on simple domestic details, or portray fiery passions. The permutations are endless, and therein lies one of the secrets of the ballet's phenomenal popularity.

A ticket is required to attend the event and can be ordered via the [personal web office](#).

Participants are responsible for covering the price of attendance.



**15:00–17:00**

St. Petersburg Stieglitz State Academy of Art and Design (15, Solnyanoy Pereulok)

Museums, exhibitions

**Tour of the Exhibition 'Golden Thread – Road of Creativity'**

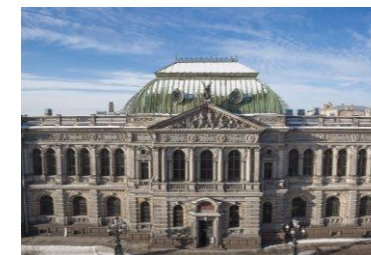
The 4th International Biennale of Hot Enamel Art 'Golden Thread – Road of Creativity' will be held in the halls of the Stieglitz Academy educational Museum of Applied Art. The exhibition will include works by contemporary enamel artists, professionals from various countries, and teachers and students from Russian and international universities.

The exhibition will present artistic traditions and experimental techniques used to create original works of art using hot enamel techniques, showcasing the diverse approaches of a number of artists and schools.

In addition to this exhibition, guests will also be able to peruse the works of the Museum of Applied Art's permanent collection.

Tours are held twice a day, starting at 15:00 and 16:00.

Interested Forum participants must register in advance through the [personal web office](#).



**15:00–18:00**

The Bolshoi State St.  
Petersburg Circus (3A,  
Naberezhnaya Reki  
Fontanki)

Theatrical performances, concerts

**Circus Performance: EpiCENTER of the World**

EpiCENTER of the World is a unique circus show staged by the Zapashny Brothers. Its plot centres on the adventures of fans travelling to the location of the FIFA World Cup 2018. This innovative show is built on beloved Russian circus traditions and an unshakable belief in treating its four-legged partners with respect. The circus ring will feature animals working with famous trainers, trapeze artists, acrobats, jugglers, and colourful clowns in the role of international football fans. EpiCENTER's action will be accompanied by the inimitable vocals of Alice Vox and the rock stylings of Teo Sound.

A ticket is required to attend the event and can be ordered via the [personal web office](#).

Participants are responsible for covering the price of attendance.



**16:00–18:00**

Boris Yeltsin  
Presidential Library (3,  
Senate Square)

Museums, exhibitions

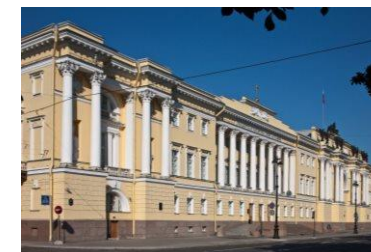
**Tour: A 21st Century Library in the Historical Synod Building**

The Boris Yeltsin Presidential Library is the largest information, cultural, and educational centre in Russia. The tour will guide guests through the historical interiors of the Synod building and the contemporary halls of the Presidential Library, which were created for holding social and state events. The latter include a conference hall and a transforming multimedia hall, which features the latest 3D-enabled technologies. Part of the excursion is a presentation of the library's electronic collection, which is stored in the Electronic Reading Room and on the Library's Internet portal. The collection includes materials on Russian history, the theory and practice of Russian statehood, the Russian language, literature, geography, and law. Guests will learn about the temporary and permanent exhibitions located within Constitution Hall, which is also home to the singular inaugural copy of the Constitution of the Russian Federation.

Tours are held twice a day, starting at 16:00 and 17:00.

Tour groups gather in the main foyer of the Presidential Library before meeting their guides.

Forum participants may present their badge to be granted entry.



**18:30–21:45**

2, Moshkov Pereulok

Theatrical performances, concerts

**The 'Faceless' Immersive Show**

'Faceless' is an alternate reality theatrical performance. There are no stages or curtains, and the main character is played by the viewer themselves.

In this immersive performance, theatregoers become a part of the action, space, and atmosphere and interact with characters that will help them seek answers to their innermost questions.

'Faceless' takes place over four floors of an over 300-year-old mansion in the heart of St. Petersburg.

Viewers will have the chance to meet 16 characters, traverse over 50 rooms, and, most importantly, see one of three simultaneous endings.

The script of 'Faceless' was inspired by the play 'Ghosts' by the playwright Henrik Ibsen. The performance is a prequel, describing the strange happenings that occurred five hours before the events of the play.

Directors: Migel, Mia Zanette.

A ticket is required to attend the performance and can be ordered via the [personal web office](#).

Participants are responsible for covering the price of attendance.



**19:00–21:30**

Jazz Philharmonic Hall  
(27, Zagorodny  
Prospekt)

Theatrical performances, concerts

**Oleg Kuvaitsev and Leningrad Dixieland**

In 2017 Russia's oldest traditional jazz band celebrated its 60th anniversary. The programme includes instrumental and vocal pieces from the American Dixieland repertoire, as well as beloved Soviet tunes presented in the band's signature style. Dance seminar from Lubov Getsova school to follow after the intermission.

A ticket is required to attend the event and can be ordered via the [personal web office](#).  
Participants are responsible for covering the price of attendance.



**19:00–20:30**

Mariinsky II (34, Ulitsa  
Dekabristov)

Theatrical performances, concerts

**Vladimir Shklyarov gala**

Programme:

"The Young Lady and the Hooligan"

Ballet in seven scenes

Music by Dmitry Shostakovich

"5 Tangos"

One-act ballet

Music by Astor Piazzolla; the recording Astor Piazzolla and His Orchestra

Choreography by Hans van Manen

"Diamonds"

Music by Pyotr Tchaikovsky

Choreography by George Balanchine (1967)

A ticket is required to attend the event and can be ordered via the [personal web office](#).

Participants are responsible for covering the price of attendance.



**19:00–21:00**

St. Petersburg State  
Academic Capella (20,  
Naberezhnaya Reki  
Moiki)

Theatrical performances, concerts

**Concert Celebrating Benny Goodman's 110th Anniversary**

A tribute to Benny Goodman, the King of Swing. The State Academic Capella symphony will perform hits from the Golden Age of swing. A screening of a film about the outstanding American clarinetist is planned.

A ticket is required to attend the event and can be ordered via the [personal web office](#).

Participants are responsible for covering the price of attendance.





**19:00–22:00**

The Bolshoi State St.  
Petersburg Circus (3A,  
Naberezhnaya Reki  
Fontanki)

Theatrical performances, concerts

**Circus Performance: EpiCENTER of the World**

EpiCENTER of the World is a unique circus show staged by the Zapashny Brothers. Its plot centres on the adventures of fans travelling to the location of the FIFA World Cup 2018. This innovative show is built on beloved Russian circus traditions and an unshakable belief in treating its four-legged partners with respect. The circus ring will feature animals working with famous trainers, trapeze artists, acrobats, jugglers, and colourful clowns in the role of international football fans. EpiCENTER's action will be accompanied by the inimitable vocals of Alice Vox and the rock stylings of Teo Sound.

A ticket is required to attend the event and can be ordered via the [personal web office](#).

Participants are responsible for covering the price of attendance.

**19:30–22:30**

Mikhailovsky Theatre  
(1, Ploschad Iskusstv)

Theatrical performances, concerts

**Ballet: Don Quixote**

Colourful, vibrant, direct, spontaneous: all these epithets can be applied to Don Quixote, but none of them can fully convey the sense of joy that the ballet invariably arouses in the audience. The red capes of the toreadors, the strumming of guitars, the clicking of castanets, coquettish glances from behind open fans... The enchanting levity of the 'ballet of Spain' surges onto the Mikhailovsky Theatre stage. Each performer interprets this ballet in their own way. While it demands virtuosity and stamina, the dancers are given complete freedom of choice in the way they act the parts. It is possible to depict the sincerity and straightforwardness of the characters or present them as cunning deceivers; place an emphasis on simple domestic details, or portray fiery passions. The permutations are endless, and therein lies one of the secrets of the ballet's phenomenal popularity.

A ticket is required to attend the event and can be ordered via the [personal web office](#).

Participants are responsible for covering the price of attendance.

**20:00–22:00**

Palace Square

Theatrical performances, concerts

**SPIEF Music Fest: From Classics to Rock**

Festival attendees will witness legendary rock band Bi-2, accompanied by a symphony orchestra conducted by the Honoured Artist of Russia Felix Aranovsky, play their well-known hits.

This event is open to Premium Package participants by invitation only.  
More information about this event can be found in the [personal web office](#).



**20:00–22:00**

Mariinsky Theatre  
Concert Hall (20,  
Ulitsa Pisareva – entry  
from 37, Ulitsa  
Dekabristov)

Theatrical performances, concerts

**Olga Borodina recital (mezzo-soprano)**

A ticket is required to attend the event and can be ordered via the [personal web office](#).

Participants are responsible for covering the price of attendance.

